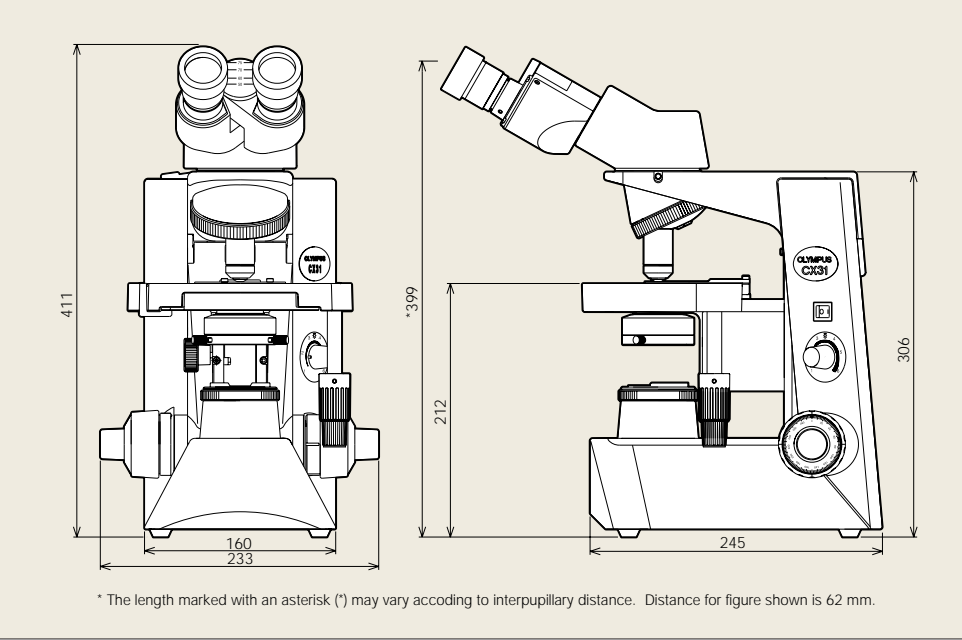



Specifications				
Item		CX31		
Optical system		UIS2 (Universal Infinity-corrected) optical system		
Illumination		Built-in transmitted Koehler illuminator 6 V 30 W halogen bulb 100-120 V/220-240 V~ 0.85/0.45 A 50/60 Hz		
Focusing		●Stage height movement by roller guide (rack & pinion) ●Stroke per rotation: 36.8 mm ●Full stroke range: 25 mm ●Upper limit stopped by simplified pre-focusing dial ●Tension adjustment on coarse focus adjustment knob		
Revolving nosepiece		Fixed quadruple nosepiece with inward tilt		
Observation tube	Type	Binocular	Trinocular	Tilting binocular
	Field number	20	20	18
	Tube inclination	30°	30°	30°—60°
	Interpupillary distance adjustment range	48—75 mm	48—75 mm	48—75 mm
	Light path selector	None	None (BI 50 %, Video/Photo 50 % fixed)	None
Stage	Size	188 (W) X 134 (D) mm		
	Movement range	76 mm (X-direction) X 50 mm (Y-direction)		
	Specimen holder	Double slide holder		
	Rubber grip	Equipped as standard		
Condenser	Type	Abbe condenser, with built-in daylight filter		
	N.A.	1.25 with oil immersion		
	Aperture iris diaphragm	Built-in		
Dimensions & weight		233 (W) X 411 (H) X 367.5 (D) mm, approximately 8 kg (approximately 17.6 lb.)		

Dimensions (Unit: mm)



Objectives, Plan Achromat		
PLCN	Numerical Aperture (N.A.)	Working Distance (W.D.: mm)
4X	0.10	18.5
10X	0.25	10.6
40X	0.65	0.6
100XO	1.25	0.13

Eyepiece	
	Field Number (F.N.)
10X (Binocular/Trinocular)	20
10X (Tilting binocular)	18

 CX31 is the environmental conscious product according to OLYMPUS's own standards.

Main features of OLYMPUS Eco-products are as follows.

- Lead-free and arsenic-free Eco-glass for optics, such as lenses and prisms.
- Exclusion of hexavalent chrome, mercury, lead and cadmium from metal materials and surface treatment of metal.
- Exclusion of lead solders.
- Adoption of cardboard for packing materials without styrene foam for promoting the recycling.

* A definition of exclusion depends on OLYMPUS standard. Some accessories are inapplicable.

Please visit our web site for further information: <http://www.olympus.co.jp/en/eco-products/>

- OLYMPUS CORPORATION is ISO14001 certified.
 - OLYMPUS CORPORATION is FM553994/ISO9001 certified.
 - Illumination devices for microscope have suggested lifetimes. Periodic inspections are required. Please visit our web site for details.
- * Specifications and appearances are subject to change without any notice or obligation on the part of the manufacturer.



OLYMPUS CORPORATION
Shinjuku Monolith, 3-1, Nishi Shinjuku 2-chome, Shinjuku-ku, Tokyo, Japan

OLYMPUS EUROPA HOLDING GMBH
Wendenstrasse 14-18, 20097 Hamburg, Germany

OLYMPUS AMERICA INC.
3500 Corporate Parkway, Center Valley, Pennsylvania 18034-0610, U.S.A.

OLYMPUS SINGAPORE PTE LTD.
491B River Valley Road, #12-01/04 Valley Point Office Tower, Singapore 248373

OLYMPUS AUSTRALIA PTY. LTD.
31 Gilby Road, Mt. Waverley, VIC 3149, Melbourne, Australia.

OLYMPUS LATIN AMERICA, INC.
5301 Blue Lagoon Drive, Suite 290 Miami, FL 33126, U.S.A.

OLYMPUS (CHINA) CO., LTD.
A8F, Ping An International Financial Center, No. 1-3, Xinyuan South Road, Chaoyang District, Beijing, China, 100027



Your Vision, Our Future

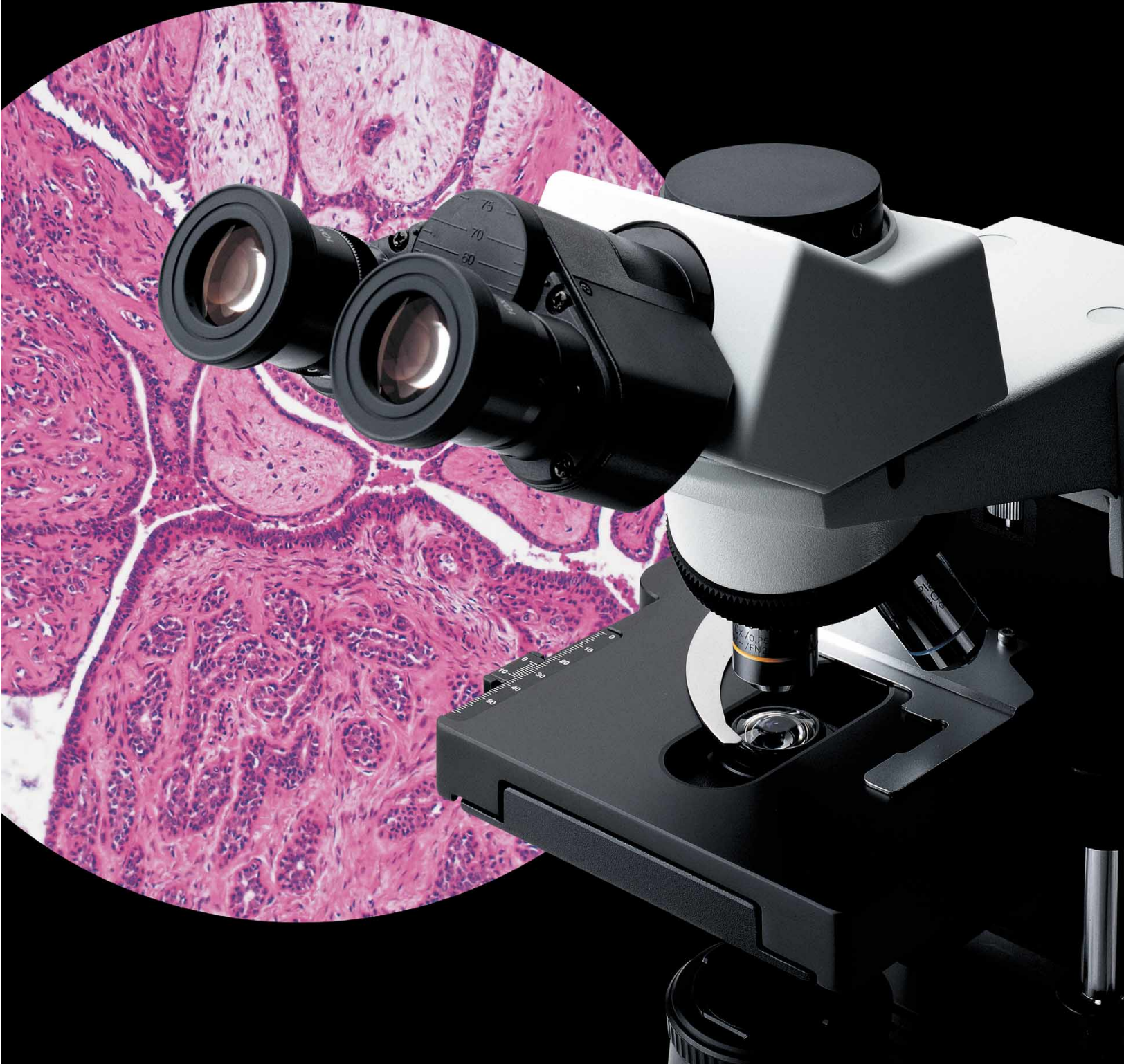
Biological Microscope

CX31

CX2 Series


World-leading optics

New standards of sharpness, clarity and flatness

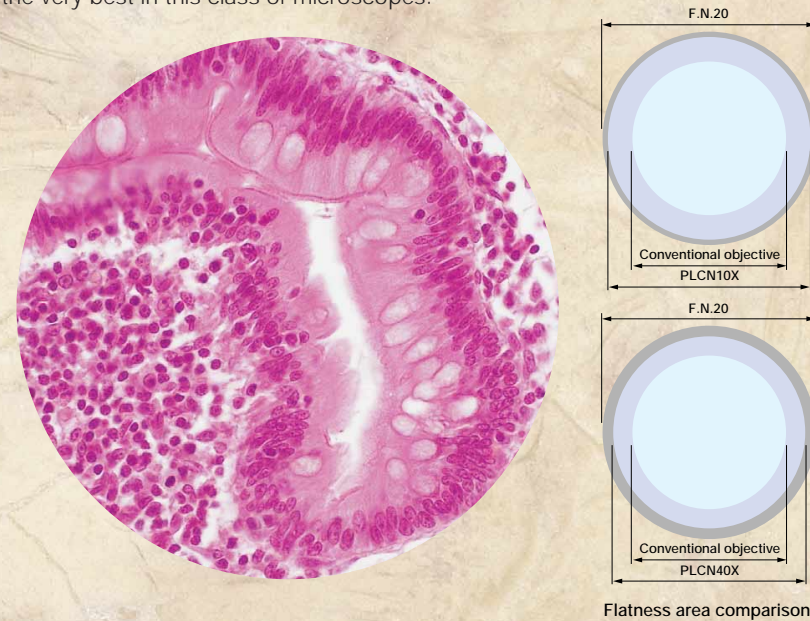


Advanced optical performance with excellent cost-efficiency.

Incorporating new UIS2 infinity optics, the Olympus CX31 microscope inherits the outstanding worldwide reputation gained by its CX2 predecessor in different medical and educational fields. As well as advanced optical performance, the CX31 offers improved ease of use and excellent cost-efficiency.

Outstanding flat images from PLCN objectives

The PLCN series of UIS2 objectives improves flatness dramatically, producing sharp, clear images right up to the edge of the field of view. Ideal for the 10x and 40x objectives so frequently used for inspection work, the flatness ranks among the very best in this class of microscopes.



Bright, even observation images

The illumination system employs a high intensity 6 V, 30 W halogen lamp for bright images. The aperture iris diaphragm with built-in condenser and standard field stop provides bright and even illumination at all levels of magnification.

Rigid, durable construction for high performance and long service life

Construction quality is excellent throughout, with objectives, eyepiece, observation tube, revolving nosepiece, highly reliable rackless stage and other components all fixed firmly to the body — so there's nothing to come loose or fall off when the microscope is being transported. The highly regarded rackless stage is employed, and since the X-axis guide does not protrude, both transportation and operation are performed easily and safely.

Anti-fungus treatment

The treatment applied to the observation tubes, eyepieces and objectives, protects quality of optical parts even in high humidity regions.



UIS2 eyepiece

Provides wide field of view (F.N. 20) and allows easy observation with eyeglasses.

Wide selection of observation tube

Three types of observation tube (binocular, trinocular and tilting binocular) are available according to users' applications.

Quadruple inward-facing revolving nosepiece

Complies with a wide range of magnifications, allows unrestricted use of the space in front of the objectives and makes it easy to confirm observation magnifications.

Coarse upper limit stopper

Locks the upper position of the stage, preventing contact between the objective and the specimen in high magnification observations.

UIS2 objectives

4X, 10X, 40X and 100X PLCN objectives, providing world-class image flatness.

Rackless stage

Rack-free stage with no side protrusions. Low-positioned control knob allows smooth and comfortable specimen movement. Scale gradations are in white lettering on a black background.

Light intensity adjustment

Continuous light adjustment is possible.

Abbe condenser

An Abbe condenser, with N.A. 1.25 and built-in aperture diaphragm, provides the appropriate diaphragm setting to different specimens and magnifications.

Field stop

Frame integrated, with ability to accept a $\phi 45$ mm filter.

Coaxial coarse/fine focusing knob

The coaxial coarse/fine focusing knob allows each operator to adjust the torque for coarse focusing operations. Focusing is smooth and easy, with the user's hands placed on the desk.

Stage handle with tactile grips

Tactile grips are fitted to the X and Y stage controls to provide a "light touch" stage movement.

Highly rigid frame

Extra rigid frame withstands frequent use and repositioning.

Hand grips for easy portability

Convenient hand grips at the front and back of the frame make it easy to carry the microscope.

